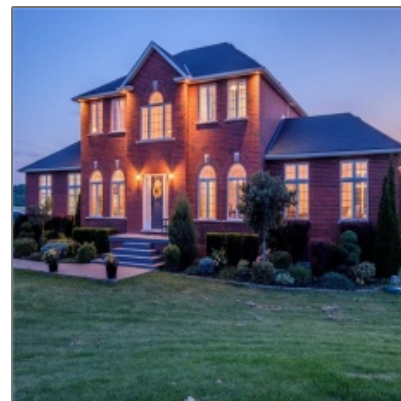
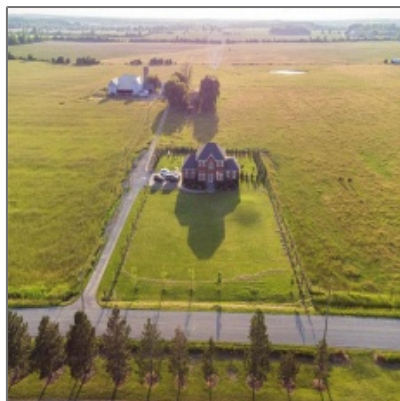


Residential Sale

3,250 Sqft - 55 Eighth Road, Stoney Creek,
Ontario L8J 3L9



Basic Details

Property Type: **Residential**

Listing Type: **Sale**

Listing ID: **H4138764**

Price: **\$3,999,900**

Bedrooms: **5**

Bathrooms: **2**

Half Bathrooms: **1**

Square Footage: **3,250 Sqft**

Baths Total: **2.1**

Municipality: **Stoney Creek**

Neighbourhood: **Stoney Creek
Escarpment**

Property Sub Type: **Freehold**

Status: **Active**

✓ Levels: **2 Storey**

Type: **Detached**

Features

✓ Pool: **Above Ground**

✓ Heating System: **Forced Air**

✓ Cooling System: **Central Air**

✓ Fireplace: **Propane**

✓ Basement Finish: **Fully Finished**

✓ Exterior: **Brick**

✓ Features Area Influences: **Greenbelt/conservation, Lake/pond, Quiet Area, Level, Park, Place Of Worship, Schools**

✓ Features Interior: **Sump Pump, Auto Garage Door Remote(s), Carpet Free, Central Vacuum, Air Exchanger, Alarm System, Water Purifier, Fire Alarm System, Satellite Dish**

✓ Foundation: **Poured Concrete**

✓ Garage And Parking: **Attached, Inside Entry**

✓ Heat Source: **Propane**

✓ Laundry Access:

In-suite



Sewers:

Septic



Water:

Cistern

Address [Map](#)

Country:	Canada
State:	Ontario
County:	Hamilton
City:	Stoney Creek
Zipcode:	L8J 3L9
Street:	Eighth
Street Number:	55
Street Suffix:	Road
Longitude:	W80° 18' 8.2"
Latitude:	N43° 9' 26"
Cross Street:	Highland Rd E
Directions:	Highland Rd E to Eighth Rd E
Street Dir Suffix:	E

MLS [Addon](#)

Office Name: **Keller Williams
Complete Realty**

Agent Name: **Diane Price**

Approximate Age: **6-15 Years**

Category: **Retail**



Drive:

[Private Triple Plus Wide](#)

Elementary School: **Tapleystown, Our
Lady of the Assumption**



Exclusions



Inclusions:

[Bar Fridge, Stove,
Washer& Dryer, Ro
System In Kit\), Stainless
Steel Stove, Alarm
System, All W/cs](#)

List Agent MLSID: **PRICEDI**

List Office MLSID: **KWCOMPLT**

Livestock Or Crop Included YN: **1**

School Districts: **Hamilton-
Wentworth Catholic
District School
Board,**

Secondary School: **Saltfleet, Bishop
Ryan**

Sq Ft Range: **3001 To 4000**